

C + R
2019-2020

modified:
Whalen 3

6th grade

NTI DAY #4

(weather-closed school day)

PACKET FOUR

(Social Studies)

General Directions:

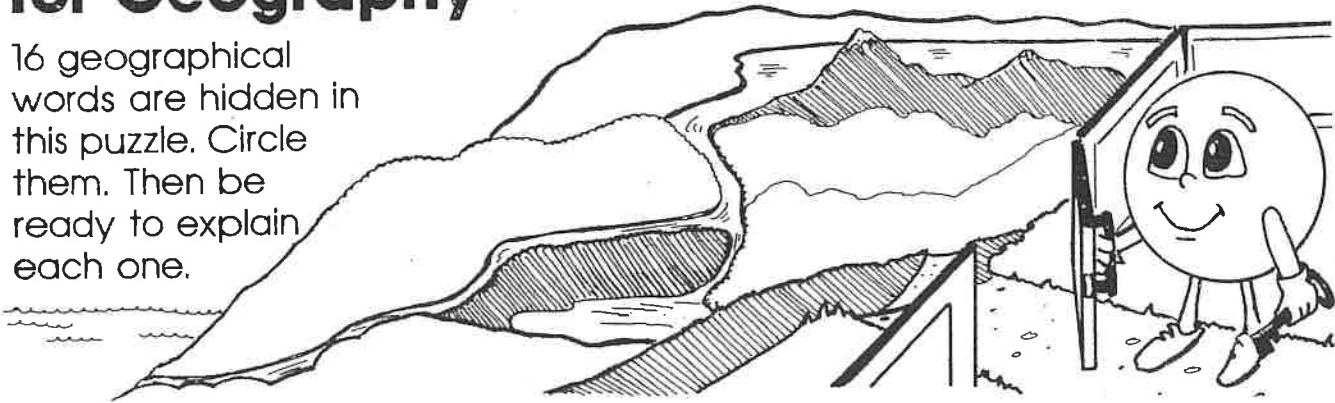
Due to weather, Harrison County Schools are closed. In an effort to utilize this day on the school calendar, your child is assigned and should work on this "packet" of school work today. It will count as a grade for this subject. The work attached is specific to the subject listed above. Please contact your child's teacher of this subject at 234-7123 in the event you/your student have questions on this packet. Staff and teachers reported to HCMS today and are available should you have questions.

While this is DUE no later than the last school day before the 3rd nine-weeks ends, we *strongly encourage* students to turn it in to their teacher as soon as it's complete (soon after the NTI day) to avoid it being lost, eaten by the family pet, burned to keep warm, etc

Gateway for Geography

Name _____

16 geographical words are hidden in this puzzle. Circle them. Then be ready to explain each one.



M	M	R	I	Z	Y	C	O	N	T	I	N	E	N	T	H	T	S	E	N	H	S
N	H	I	Y	R	O	O	P	E	D	N	Y	R	N	T	L	L	I	E	N	R	O
Y	L	V	N	A	I	N	D	R	E	R	E	U	S	N	I	O	O	P	A	A	C
B	T	E	X	T	M	B	G	U	L	F	U	K	I	N	L	M	Y	I	E	O	E
A	K	R	G	B	N	Q	Y	T	T	P	O	G	R	S	M	E	O	R	C	U	A
C	O	N	W	T	L	O	U	B	A	O	U	C	G	A	O	P	K	D	N	F	N
R	P	E	N	I	N	S	U	L	A	N	U	N	O	I	U	S	A	B	E	K	W
D	N	O	T	C	G	N	Y	T	C	S	I	S	L	A	N	D	I	L	A	G	L
M	J	P	O	I	K	R	O	R	T	U	T	U	D	C	T	U	M	U	E	Y	E
C	H	A	N	N	E	L	M	I	D	I	R	I	U	G	A	N	N	S	C	D	P
E	A	Q	D	D	T	S	U	B	H	O	W	S	R	E	I	C	S	T	R	N	U
S	I	N	V	H	J	L	A	U	E	H	L	Y	N	O	N	A	T	R	O	N	E
F	E	R	A	T	O	I	B	T	I	H	A	D	I	V	I	X	I	A	F	I	O
H	O	S	W	L	E	L	H	A	F	T	K	N	D	N	T	D	H	I	U	R	P
G	V	T	U	I	F	F	E	R	N	G	E	L	I	I	W	E	O	T	Y	T	U
A	B	A	S	I	N	A	G	Y	I	K	I	U	F	N	M	N	E	A	N	O	I

Word Bank

basin
bay
canal
channel

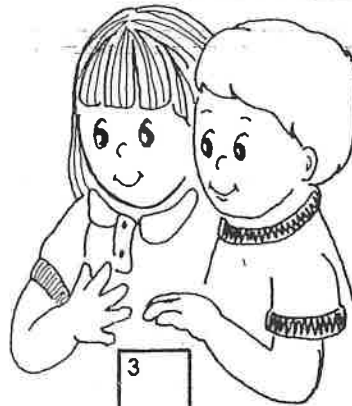
gulf
island
lake
mountain

ocean
peninsula
continent
delta

river
sea
strait
tributary

Land and Water

Name _____

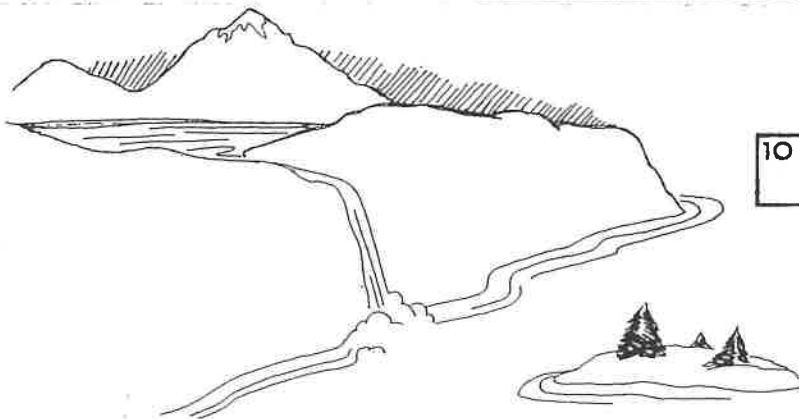
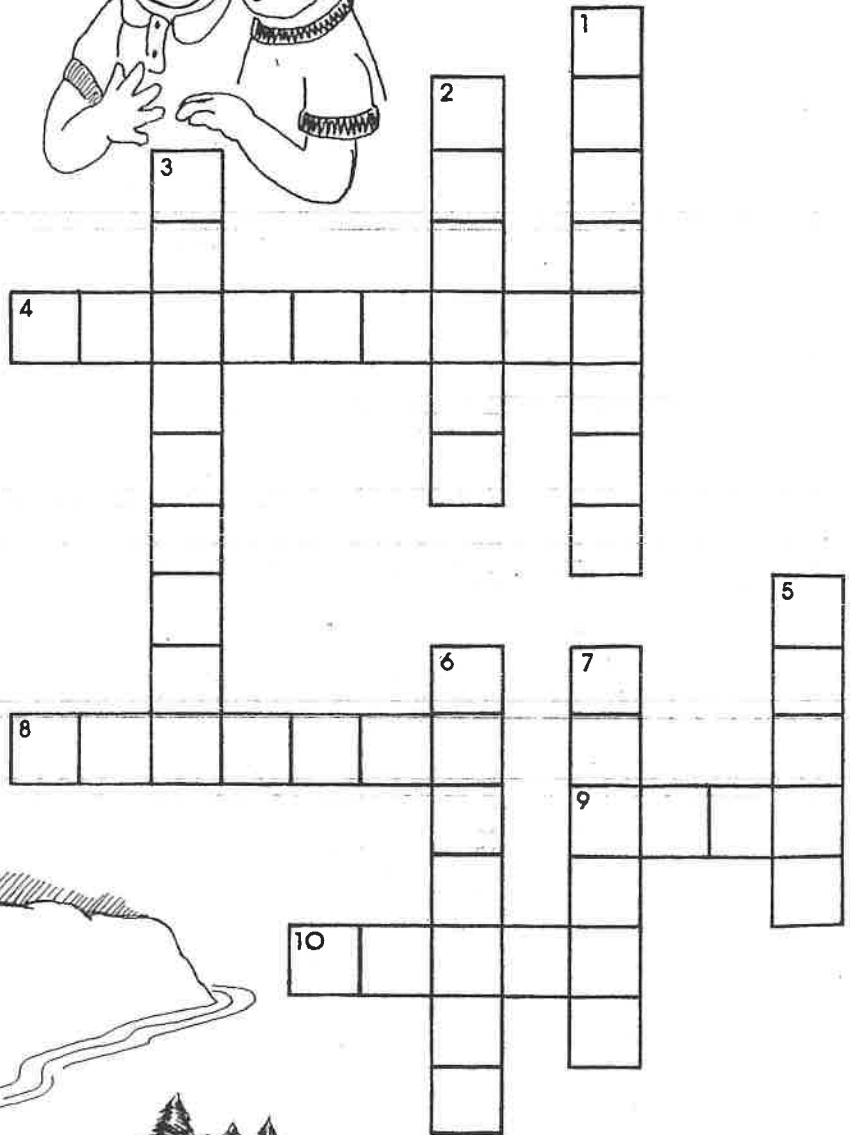


Across

- 4. One of the seven large bodies of land on the earth
- 8. The deep, narrow part of a waterway
- 9. An inland body of water
- 10. A great body of salt water

Down

- 1. High, rocky land – it usually has steep sides and a pointed or rounded top.
- 2. A land area with very little water or plant-life
- 3. A body of land almost surrounded by water
- 5. A large stream of water which empties into an ocean or lake
- 6. A level area of land found in the mountains
- 7. A body of land which is totally surrounded by water

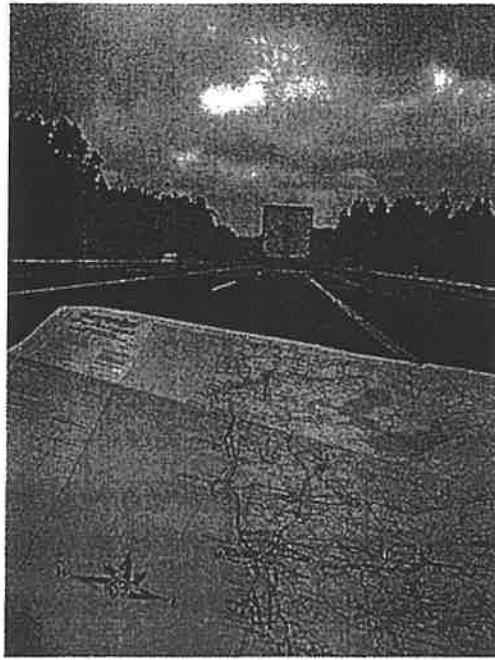


Word Bank

- | | | | |
|---------|----------|-----------|-----------|
| plateau | gulf | ocean | river |
| desert | island | peninsula | sea |
| canal | lake | continent | strait |
| channel | mountain | delta | tributary |

Finding Places with a Map

By Kate Paixão



Maps help people understand the world. A *world map* shows where places are on Earth. That map helps us see how close or far one country is from another. A *road map* includes streets and highways. It helps travelers figure out how to get where they want to go.

Maps use symbols. A dot may stand for a city. A swing may represent a park. Maps include a key, or legend, listing those symbols. The legend tells what each symbol means.

Finding places on a map is not always simple. That is why maps use numbers, letters, and lists to make the search easier.

Here is an example. Most maps use a grid, which is like a checkerboard. Along one edge of the grid, small letters are spaced evenly. On another side, numbers are printed in the same way.

Those maps include a list of places. Next to the name of each place will be a letter and a number—such as “A7.” To find that place, you look for “A” on the letter side of the map, and “7” on the number side. Finally, you locate the area where the letter and the number meet. Nearby, you should find the place you’re looking for!

Name: _____ Date: _____

1. What do maps help people do?

- A) Maps help people print numbers on a grid.
- B) Maps help people understand the world.
- C) Maps help people make checkerboards.

2. What does the author compare to a grid on a map?

- A) a highway
- B) a checkerboard
- C) a legend

3. Read these sentences from the text.

"Maps use symbols. A dot may stand for a city. A swing may represent a park. Maps include a key, or legend, listing those symbols. The legend tells what each symbol means."

What can you conclude from this paragraph about dots and swings on a map?

- A) Dots and swings are examples of keys on a map.
- B) Dots and swings are examples of legends on a map.
- C) Dots and swings are examples of symbols on a map.

4. If you wanted to know how far the country of the United States is from the country of China, what kind of map should you use?

- A) a map with a lot of symbols
- B) a road map
- C) a world map

5. What is the main idea of this article?

- A) Maps are helpful, but using them is not always easy.
- B) Most maps use a grid that is similar to a checkerboard.
- C) A road map helps travelers because it includes streets and highways.

6. Why might the author include an example of finding a place on a map?

- A) to compare the symbol for a city with the symbol for a park
- B) to show how maps can be used to figure out the distance between two countries
- C) to help readers understand how to find a place on a map

7. Choose the answer that best completes this sentence.

Maps can help people understand the world _____ they show people where different parts of the world are.

- A) so
- B) because
- C) but

8. What do road maps help travelers do?

9. Name three things that maps use to make finding places on a map easier.

10. Explain how numbers, letters, and lists can make finding a place on a map easier. Support your answer with evidence from the article.

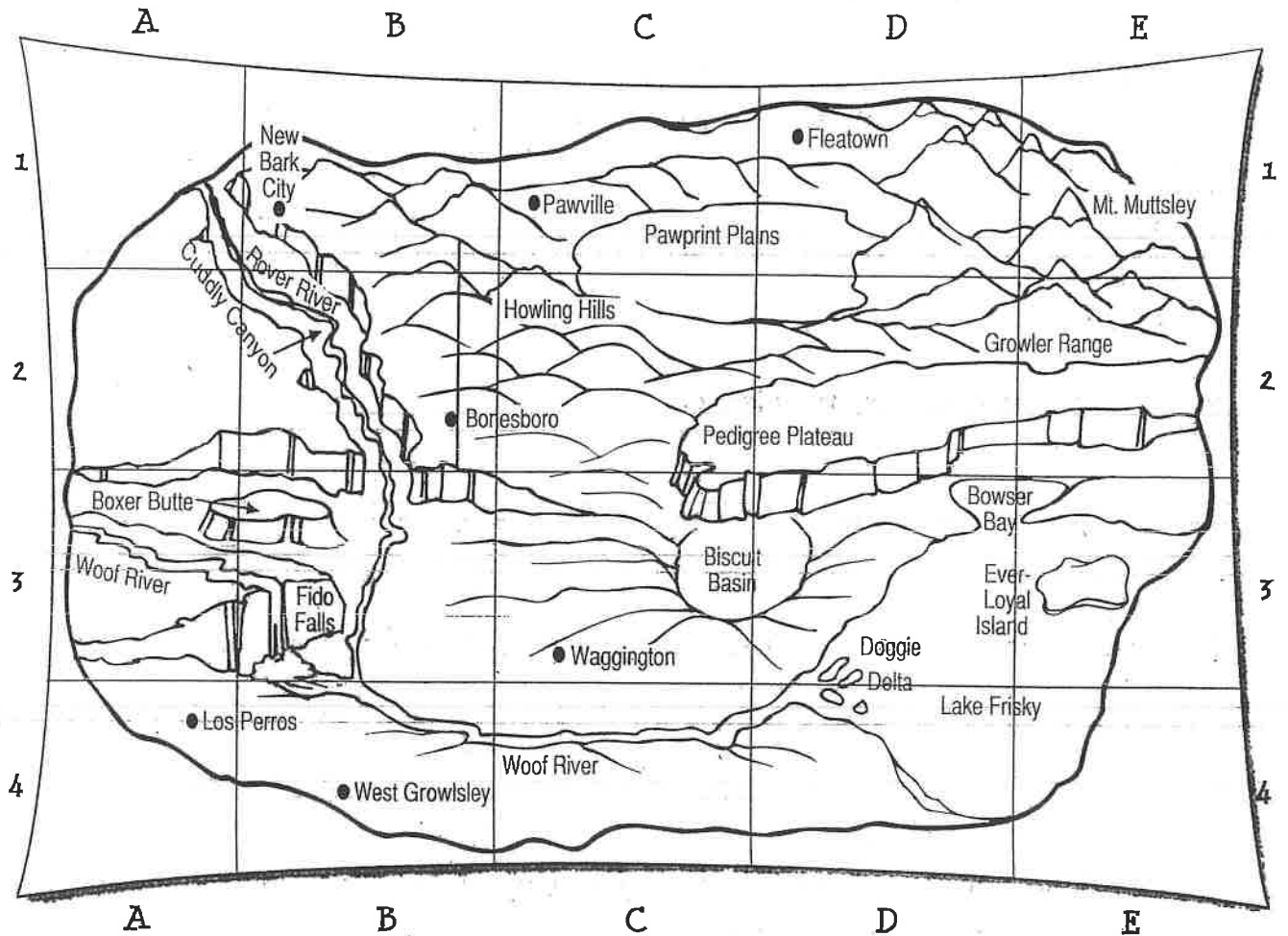
Name _____

Using map coordinates, landform

Date _____

Canine Country Coordinates

Use the map to complete the charts.



City	Location
1. New Bark City	B1
2. Bonesboro	
3.	D1
4. West Growlsley	
5.	A4
6. Waggington	

Point of Interest	Location
7. Boxer Butte	A3, B3
8. Biscuit Basin	
9. Cuddly Canyon	
10. Doggie Delta	
11. Fido Falls	
12. the mouth of Woof River	
13. Ever-Loyal Island	
14.	E1
15. Pawprint Plains	
16. Pedigree Plateau	

Bonus: In how many grid squares is Lake Frisky? List them.